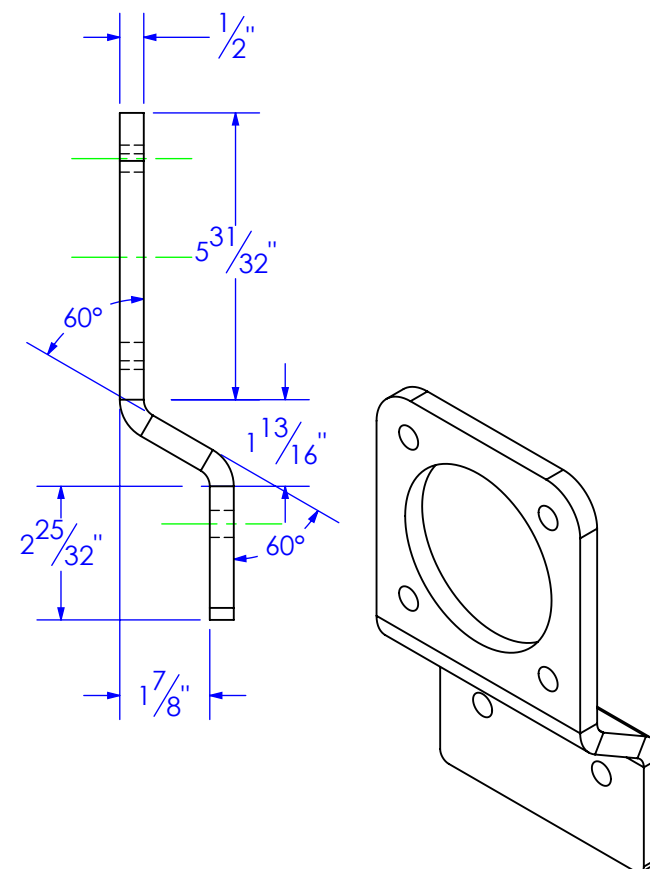
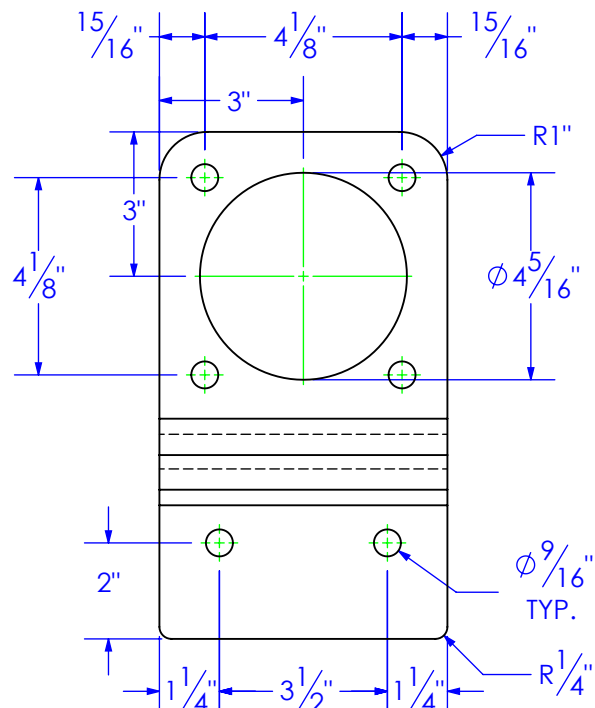
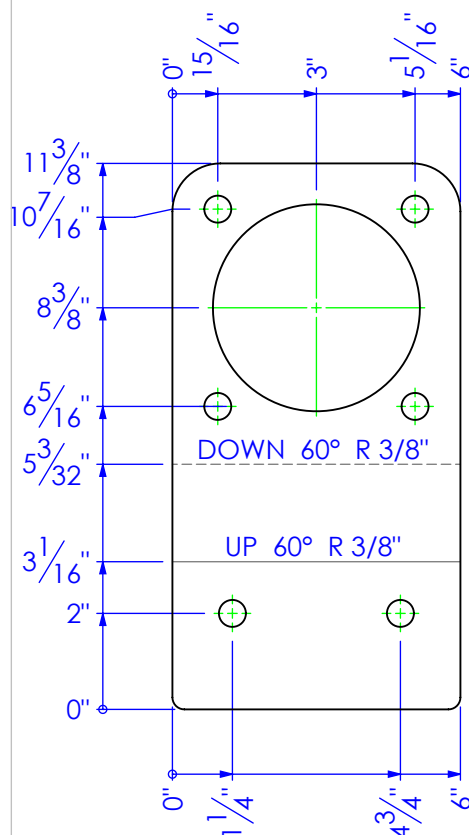


REVISIONS			
REV.	DESCRIPTION	DATE	APPROVED
A	INITIAL RELEASE	10/20/2017	
B	REVISED FOR NEW MOTOR	12/12/2017	



**PROPRIETARY AND CONFIDENTIAL**  
THE INFORMATION CONTAINED IN THIS  
DRAWING IS THE SOLE PROPERTY OF  
HYDRABEDS. ANY REPRODUCTION IN PART  
OR AS A WHOLE WITHOUT THE WRITTEN  
PERMISSION OF HYDRABEDS IS PROHIBITED.

UNLESS OTHERWISE SPECIFIED:  
DIMENSIONS ARE IN INCHES  
TOLERANCES:  
FRACTIONAL  $\pm 1/16$   
ANGULAR: MACH  $\pm 1$  BEND  $\pm$   
TWO PLACE DECIMAL  $\pm .010$   
THREE PLACE DECIMAL  $\pm .005$

MATERIAL 1/2" HRS

DO NOT SCALE DRAWING

	NAME	DATE
DRAWN	ETHAN	12/12/2017
PART #	FP-RL-RTVL-MTR BRKT	
ASM #		
COMMENTS:		

MOTOR BRACKET,  
RETRIEVAL, REEL LIFT

P.O. BOX 248, SABETHA, KS 66534  
(785) 284-3674 FAX (785) 284-3931



SIZE <b>A</b>	DWG. NO. <b>12-2455</b>	REV <b>B</b>
SCALE: 1:4	WEIGHT: 7.45	SHEET 1 OF 1